

Round silencers SIL-GL/SI-GL



Description

The SI-GL silencers are not provided with gaskets. The SIL-GL silencers are delivered with the SPIRAL® system seals. The SIL-GL and SI-GL silencers have permanently fixed covers, which are not removable. Glass wool thickness inside the silencer:

25 mm for SIL-GL-25 / SI-GL-25 — depends on the outer cladding size.

50 mm for SIL-GL-50 / SI-GL-50 — depends on the outer cladding size.

100 mm for SIL-GL-100 / SI-GL-100 — depends on the outer cladding size.

Insulation:

Insulation material: glass wool.

Insulation type: trimmed from reel, flexible.

Available materials — Product code examples

SIL-GL-...-...-... — galvanized steel sheet

SIL-GL-K-...-...-... — 1.4301/304 stainless steel sheet

SIL-GL-K-...-...-...-316L — 1.4404/316L stainless steel sheet

SIL-GL-A-...-...-... — aluminium sheet

Product code examples

Product code: **SIL-GL - iii - aaa - bbb**

type

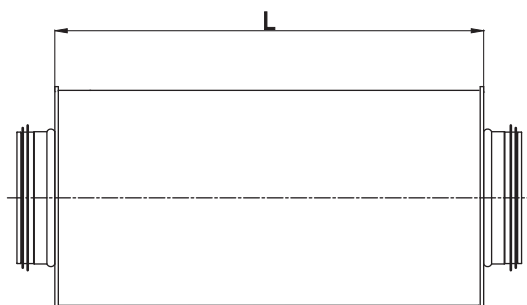
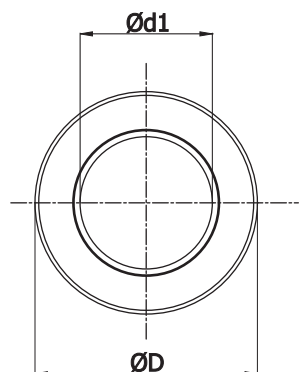
Insulation thickness

Ød₁

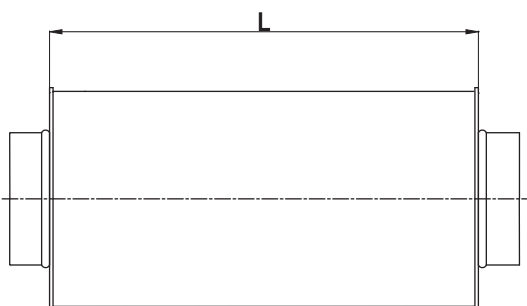
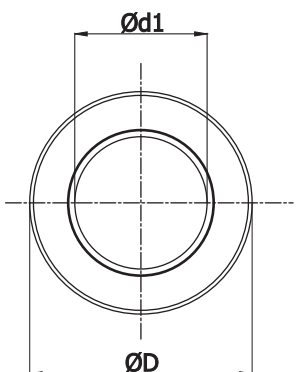
L

Dimensions

SIL-GL



SI-GL



Round silencers

SIL-GL/SI-GL

Dimensions

SIL-GL-50 / SI-GL-50 — 50 mm insulation

Description	$\varnothing d_1$ <small>nom</small> (mm)	D_{nom} (mm)	L (mm)	Sound insulation (dB) at frequency (Hz)									
				125	250	500	1000	2000	4000	8000			
SIL-GL													
080-300	80	180	300	6	15	29	45	50	26	28	2		
080-500	80	180	500	9	18	32	48	53	29	31	3		
080-600	80	180	600	11	19	33	49	54	30	32	3		
080-900	80	180	900	13	22	36	52	57	33	35	5		
080-1000	80	180		14	23	37	53	58	34	36	6		
100-300	100	200	300	5	13	26	41	44	22	24	2		
100-500	100	200	500	8	16	29	44	47	26	27	3		
100-600	100	200	600	9	17	30	45	49	27	29	3		
100-900	100	200	900	12	19	32	48	51	29	31	5		
100-1000	100	200		13	21	34	49	52	30	32	6		
125-300	125	224	300	4	11	22	37	41	19	21	3		
125-500	125	224	500	7	14	26	40	44	22	24	4		
125-600	125	224	600	8	15	27	41	45	24	25	4		
125-900	125	224	900	11	18	29	44	47	26	28	7		
125-1000	125	224		12	19	31	45	49	27	29	7		
160-300	160	250	300	3	9	20	33	35	16	18	3		
160-500	160	250	500	6	12	23	36	38	19	21	5		
160-600	160	250	600	7	14	24	37	39	21	22	6		
160-900	160	250	900	10	16	26	40	42	23	25	8		
160-1000	160	250		11	17	28	41	43	24	26	8		
200-300	200	315	300	2	7	16	31	31	15	16	4		
200-500	200	315	500	5	10	19	34	34	18	19	6		
200-600	200	315	600	6	11	20	35	35	19	20	7		
200-900	200	315	900	8	13	23	38	38	22	23	10		
200-1000	200	315		9	15	24	39	39	23	24	11		
250-500	250	355	500	4	9	18	29	27	15	16	9		
250-600	250	355	600	5	11	19	30	28	16	18	11		
250-900	250	355	900	8	13	22	33	31	19	20	14		
250-1000	250	355		9	14	23	33	32	20	21	12		
315-500	315	400	500	4	7	14	23	21	13	14	11		
315-600	315	400	600	5	8	16	25	19	14	15	12		
315-900	315	400	900	7	11	18	28	21	17	18	16		
315-1000	315	400		8	12	19	28	22	18	19	16		