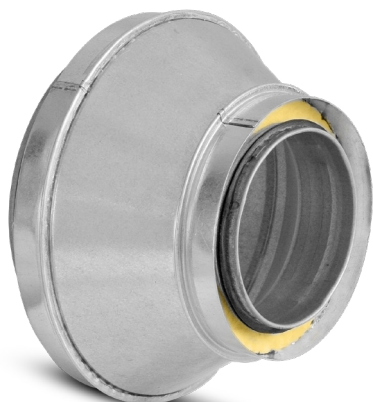


IZOL® system pre-insulated reducers

RSCLLI

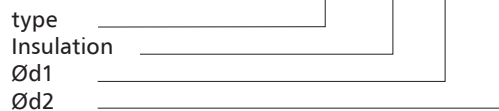


Description

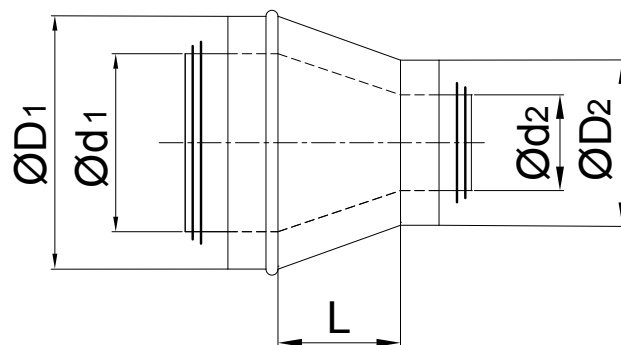
All RSCLLI pre-insulated reducers consist of an inner reducer with an EPDM gasket and an outer reducer without gaskets.

Product code example

Product code: **RSCLLI - 25 - 200 - 125**



Dimensions



25 mm insulation					
Ød ₁ (mm)	ØD ₁ (mm)	Ød ₂ (mm)	ØD ₂ (mm)	L (mm)	Weight (kg)
125	100	180	150	64	0.9
140	100	200	150	85	1
140	125	200	180	51	0.9
150	100	200	150	99	1.2
150	125	200	180	64	1
150	140	200	200	44	0.9
160	100	224	150	112	1.3
160	125	224	180	78	1.2
160	140	224	200	57	1.1
160	150	224	200	44	1
200	100	250	150	167	2
200	125	250	180	133	1.9
200	140	250	200	112	1.8
200	150	250	200	99	1.6
200	160	250	224	85	1.6
200	180	250	224	58	1.4
224	100	280	150	200	2.4
224	125	280	180	166	2.2
224	140	280	200	145	2.3
224	150	280	200	132	2.2
224	160	280	224	118	2.2
224	180	280	224	90	2
224	200	280	250	63	1.9
250	100	300	150	236	3.1
250	125	300	180	202	3
250	140	300	200	181	2.8
250	150	300	200	167	2.7
250	160	300	224	154	2.7
250	180	300	224	126	2.4
250	200	300	250	99	2.4
250	224	300	280	66	2.2

RSCLLI

Dimensions

25 mm insulation					
$\varnothing d_1$ (mm)	$\varnothing D_1$ (mm)	$\varnothing d_2$ (mm)	$\varnothing D_2$ (mm)	L (mm)	Weight (kg)
280	125	315	180	243	3.9
280	140	315	200	222	3.8
280	150	315	200	209	3.6
280	160	315	224	195	3.5
280	180	315	224	167	3.3
280	200	315	250	140	3.2
280	224	315	280	107	3
280	250	315	300	71	2.8
300	125	355	180	270	4.5
300	140	355	200	250	4.4
300	150	355	200	236	4.3
300	160	355	224	222	4.2
300	180	355	224	195	3.9
300	200	355	250	167	3.8
300	224	355	280	135	3.7
300	280	355	315	58	3.3
315	100	355	150	310	5.2
315	125	355	180	291	5.1
315	140	355	200	270	5.1
315	150	355	200	257	5.5
315	160	355	224	243	4.8
315	180	355	224	216	4.5
315	200	355	250	188	4.4
315	224	355	280	155	4
315	250	355	300	119	3.8
250	140	300	200	181	2.8
250	150	300	200	167	2.7
250	160	300	224	154	2.7
250	180	300	224	126	2.4
250	200	300	250	99	2.4
250	224	300	280	66	2.2
315	280	355	315	78	3.5
315	300	355	355	51	3.2
355	160	400	224	298	6.4
355	180	400	224	270	6.1
355	200	400	250	243	5.8
355	224	400	280	224	5.7
355	250	400	300	174	5.3
355	280	400	315	133	4.9
355	300	400	355	106	4.6
355	315	400	355	85	4.4

25 mm insulation					
$\varnothing d_1$ (mm)	$\varnothing D_1$ (mm)	$\varnothing d_2$ (mm)	$\varnothing D_2$ (mm)	L (mm)	Weight (kg)
400	160	450	224	365	8.3
400	180	450	224	337	7.9
400	200	450	250	310	7.7
400	224	450	280	277	7.4
400	250	450	300	241	7.1
400	280	450	315	200	6.8
400	300	450	355	172	6.4
400	315	450	355	152	6.1
400	355	450	400	97	5.6
450	200	500	250	378	9.8
450	224	500	280	346	9.5
450	250	500	300	310	9.1
450	280	500	315	269	8.7
450	300	500	355	241	8.3
450	315	500	355	221	7.8
450	355	500	400	166	7.3
450	400	500	450	109	6.7
500	224	560	280	414	11.6
500	250	560	300	378	11.3
500	280	560	315	337	10.9
500	300	560	355	310	10.5
500	315	560	400	289	10.2
500	355	560	400	234	9.5
500	400	560	450	177	8.8
500	450	560	500	109	7.8

IZOL[®] system pre-insulated reducers**RSCLLI****Dimensions**

50 mm insulation					
$\varnothing d_1$ (mm)	$\varnothing D_1$ (mm)	$\varnothing d_2$ (mm)	$\varnothing D_2$ (mm)	L (mm)	Weight (kg)
125	100	224	200	64	1.1
140	100	250	200	85	1.4
140	125	250	224	51	1.3
150	100	250	200	99	1.6
150	125	250	224	64	1.4
150	140	250	250	44	1.3
160	100	280	200	112	1.8
160	125	280	224	78	1.7
160	140	280	250	57	1.6
160	150	280	250	44	1.4
200	100	300	200	167	2.5
200	125	300	224	133	2.3
200	140	300	250	112	2.2
200	150	300	250	99	2.1
200	160	300	280	85	2
200	180	300	280	58	1.8
224	100	315	200	200	3.4
224	125	315	224	166	3.1
224	140	315	250	145	3
224	150	315	250	132	2.9
224	160	315	280	118	2.8
224	180	315	280	90	2.5
224	200	315	300	63	2.3
250	100	355	200	236	4.3
250	125	355	224	202	4
250	140	355	250	181	3.8
250	150	355	250	167	3.7
250	160	355	280	154	3.6
250	180	355	280	126	3.3
250	200	355	300	99	3.1
250	224	355	315	66	2.8
280	125	400	224	243	5.3
280	140	400	250	222	5.2
280	150	400	250	209	5.1
280	160	400	280	195	5
280	180	400	280	167	4.6
280	200	400	300	140	4.3
280	224	400	315	107	3.9
280	250	400	355	71	3.6

50 mm insulation					
$\varnothing d_1$ (mm)	$\varnothing D_1$ (mm)	$\varnothing d_2$ (mm)	$\varnothing D_2$ (mm)	L (mm)	Weight (kg)
300	125	400	224	270	5.7
300	140	400	250	250	5.6
300	150	400	250	236	5.4
300	160	400	280	222	5.3
300	180	400	280	195	5
300	200	400	300	167	4.7
300	224	400	315	135	4.6
300	250	400	355	99	4.3
315	250	400	355	119	4.6
315	280	400	400	78	4.2
315	300	400	400	51	3.8
355	160	450	280	298	7.7
355	180	450	280	270	7.4
355	200	450	300	243	6.9
355	224	450	315	224	6.7
355	250	450	355	174	6.0
355	280	450	400	133	5.7
355	300	450	400	106	5.3
355	315	450	400	85	5.0
400	160	500	280	365	9.9
400	180	500	280	337	9.5
400	200	500	300	310	9.1
400	224	500	315	277	8.6
400	250	500	355	241	8.3
400	280	500	400	200	7.8
400	300	500	400	172	7.2
400	315	500	400	152	6.2
400	355	500	450	97	6.1
450	200	560	300	378	11.5
450	224	560	315	346	11.2
450	250	560	355	310	10.6
450	280	560	400	269	10
450	300	560	400	241	9.5
450	315	560	400	221	9.1
450	355	560	450	166	8.2
450	400	560	500	109	7.4
500	200	600	300	447	16.8
500	224	600	315	414	15.7
500	250	600	355	378	15.2
500	280	600	400	337	15.0
500	300	600	400	310	13.9
500	315	600	400	289	13.4
500	355	600	450	234	12.1
500	400	600	500	177	10.9
500	450	600	560	109	9.2

RSCLLI

Dimensions

100 mm insulation					
$\varnothing d_1$ (mm)	$\varnothing D_1$ (mm)	$\varnothing d_2$ (mm)	$\varnothing D_2$ (mm)	L (mm)	Weight (kg)
125	100	315	300		
140	100	355	300		
140	125	355	315		
150	100	355	300		
150	125	355	315		
150	140	355	355		
160	100	355	300		
160	125	355	315		
160	140	355	355		
160	150	355	355		
200	100	400	300		
200	125	400	315		
200	140	400	355		
200	150	400	355		
200	160	400	355		
200	180	400	400		
224	100	450	300		
224	125	450	315		
224	140	450	355		
224	150	450	355		
224	160	450	355		
224	180	450	400		
224	200	450	400		
250	100	450	300		
250	125	450	315		
250	140	450	355		
250	150	450	355		
250	160	450	355		
250	180	450	400		
250	200	450	400		
250	224	450	450		
280	125	500	315		
280	140	500	355		
280	150	500	355		
280	160	500	355		
280	180	500	400		
280	200	500	400		
280	224	500	450		
280	250	500	450		

100 mm insulation					
$\varnothing d_1$ (mm)	$\varnothing D_1$ (mm)	$\varnothing d_2$ (mm)	$\varnothing D_2$ (mm)	L (mm)	Weight (kg)
300	125	500	315		
300	140	500	355		
300	150	500	355		
300	160	500	355		
300	180	500	400		
300	200	500	400		
300	224	500	450		
300	250	500	450		
315	250	500	450		
315	280	500	500		
315	300	500	500		
355	160	560	355		
355	180	560	400		
355	200	560	400		
355	224	560	450		
355	250	560	450		
355	280	560	500		
355	300	560	500		
355	315	560	500		
400	160	600	355		
400	180	600	400		
400	200	600	400		
400	224	600	450		
400	250	600	450		
400	280	600	500		
400	300	600	500		
400	315	600	500		
400	355	600	560		
450	200	630	400		
450	224	630	450		
450	250	630	450		
450	280	630	500		
450	300	630	500		
450	315	630	500		
450	355	630	560		
450	400	630	600		
500	200	710	400		
500	224	710	450		
500	250	710	450		
500	280	710	500		
500	300	710	500		