

Roof base with duct for spiral ductwork systems

PD-B2**Description**

The type B2 roof bases are designed for flat roofs. Versions available on request can be installed on roof slopes up to 30 degrees. The top part of the product has a FLS steel flange for installation of a roof air intake, a roof exhaust vent, a silencer, or a roof ventilator (fan). The steel flange provides a sturdy joint which can easily withstand vibration generated by fan units. Versions available on request can also have a male connection which can be provided with an EPDM gasket for female-connection air intake units/exhaust vents in ventilation systems not exposed to high vibration levels or strong gusts of wind. The bottom of the roof base is designed for direct fastening to spiral ducts, female connectors and fittings. The product can be made from stainless steel or aluminium sheet on request (aluminium roof bases are available with a male connection only).

Available materials — Product code examples

PD-B2-...-... - galvanized steel sheet

PD-B2-K-...-... - 1.4301/304 stainless steel sheet

PD-B2-A-...-... - aluminium sheet

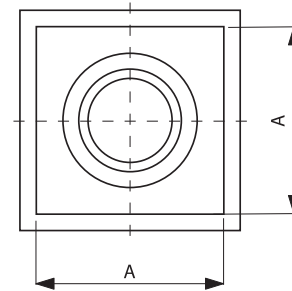
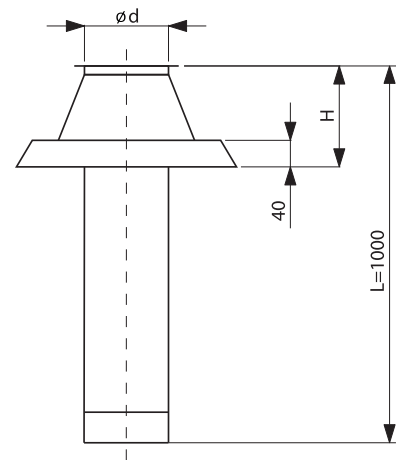
Product code example

Product code: **PD-B2 - aaa - bbb**

type _____
 Ød _____
 installation* _____

* GALA - EPDM gasket

* NS - male connection w/o gaskets

Dimensions

$\varnothing d_{nom}$ [mm]	A [mm]	H [mm]	Weight [kg]
100	280	180	3.38
125	300	180	3.81
140	360	180	4.56
150	380	180	4.67
160	400	180	4.92
200	440	180	5.83
250	470	200	7.14
300	510	200	8.43
315	530	200	8.86
355	610	200	11.03
400	630	200	12.04
450	720	200	15.37
500	740	200	16.64
560	800	240	19.80
630	900	240	22.54
710	1020	240	28.70
800	1100	280	32.63
1000	1270	280	40.72