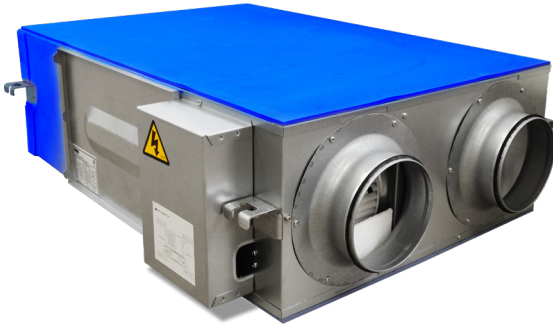


Heat recovery ventilator HRU-ERGO



Description

The HRU-ERGO heat recovery ventilator is a suspended unit with an extremely efficient counter-flow heat exchanger. The heat exchanger is made from plastic and processed cellulose which has a high water vapour permeability ratio, good air tightness, and good resistance to ageing. The spacing between the cellulose fibres allows free passage of water vapour molecules. Larger molecules, like those of odours, cannot pass through the heat exchanger. This prevents the contamination of the fresh air supplied indoors. The heat recovery ventilators are available in an output range from 250 m³/h to 1000 m³/h.

A standard HRU-ERGO heat recovery ventilator features 10-speed energy-efficient fans, automatic air bypass, defrosting mode (based on a fan speed control algorithm), 2 air filters, and steel duct connections.

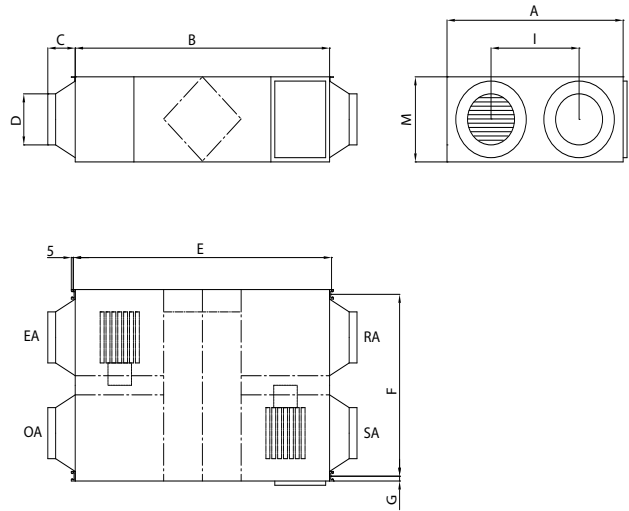
Optional accessories include the HDE-CO electric heater and the HDW water heater, the HRU-CONTR-TPAD touch-screen controller, as well as CO₂ and air humidity sensors.

Product code example

Product code: **HRU-ERGO-250**

type _____

Dimensions



Model	Dimensions [mm]								
	A	B	C	D	E	F	G	I	M
HRU-ERGO-250	599	882	100	160	810	657	19	315	270
HRU-ERGO-350	804	882	100	160	813	860	19	480	270
HRU-ERGO-500	904	962	107	200	890	960	19	500	270
HRU-ERGO-650	884	1222	107	200	1150	940	19	480	340
HRU-ERGO-800	884	1322	85	250	1250	940	19	428	388
HRU-ERGO-1000	1134	1322	85	250	1250	1190	19	678	388

Technical specifications

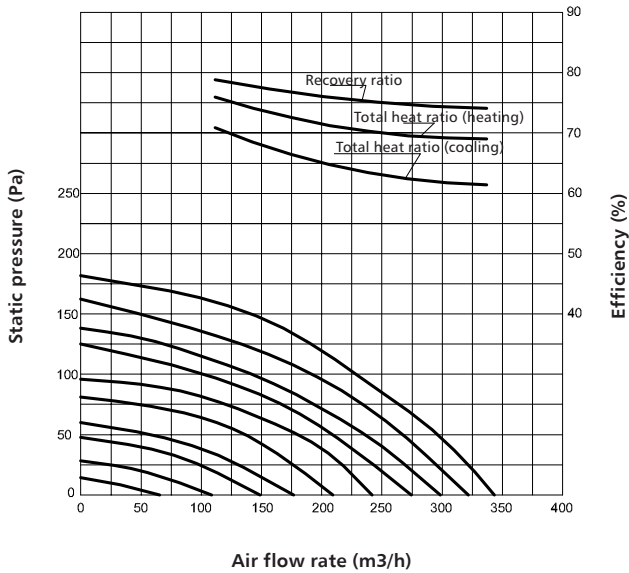
Model	Air flow rate (m ³ /h)	Enthalpy efficiency (%)		Temperature recovery efficiency (%)	Noise level (dB)	Voltage (V)	Power (W)	Weight (kg)
		Summer	Winter					
HRU-ERGO-250	250	63-70	70-75	75-84	34,5	230	46	29
HRU-ERGO-350	350	66-72	69-75	75-84	37,5	230	60	37
HRU-ERGO-500	500	62-74	67-75	75-86	39	230	51	43
HRU-ERGO-650	650	62-70	68-73	75-84	39,5	230	78	64
HRU-ERGO-800	800	65-74	71-77	75-84	42	230	186	71
HRU-ERGO-1000	1000	65-74	71-78	75-85	43	230	246	83

Heat recovery ventilator HRU-ERGO

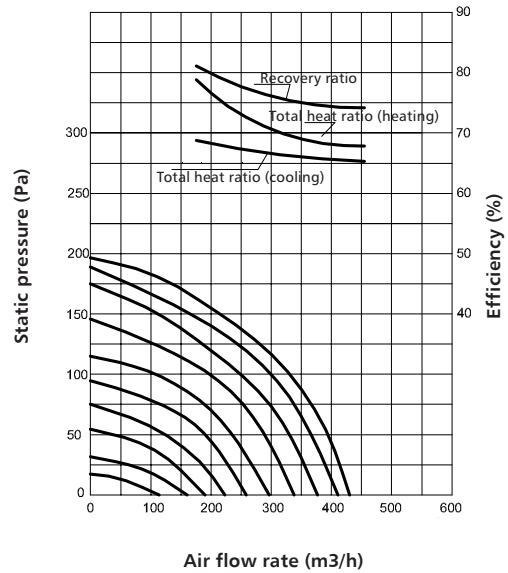
Technical specifications

Selection chart

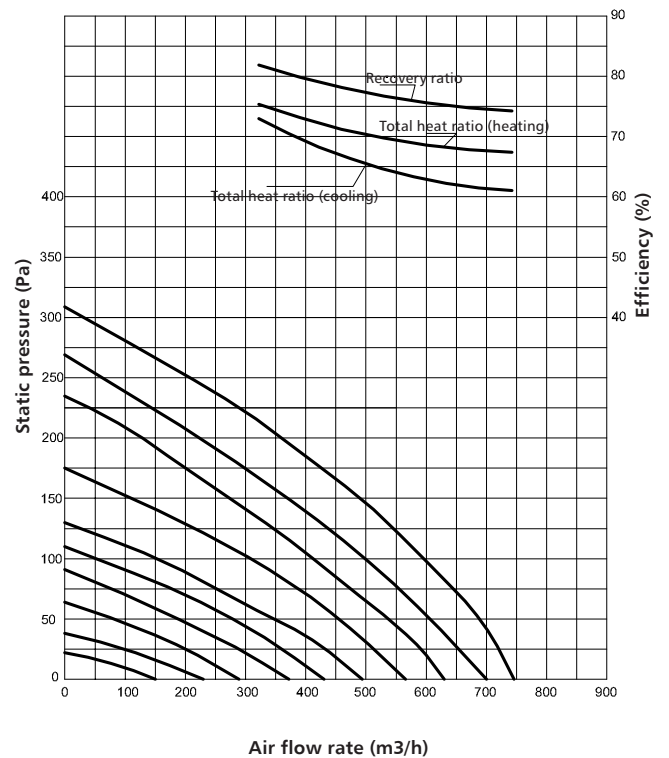
HRU-ERGO-250



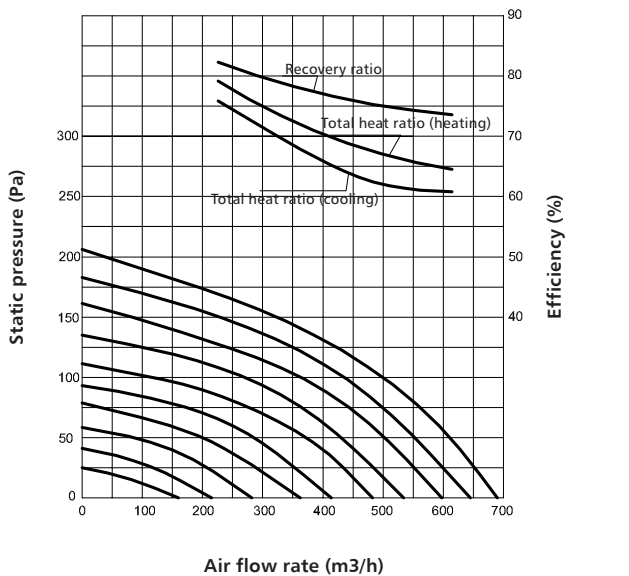
HRU-ERGO-350



HRU-ERGO-650



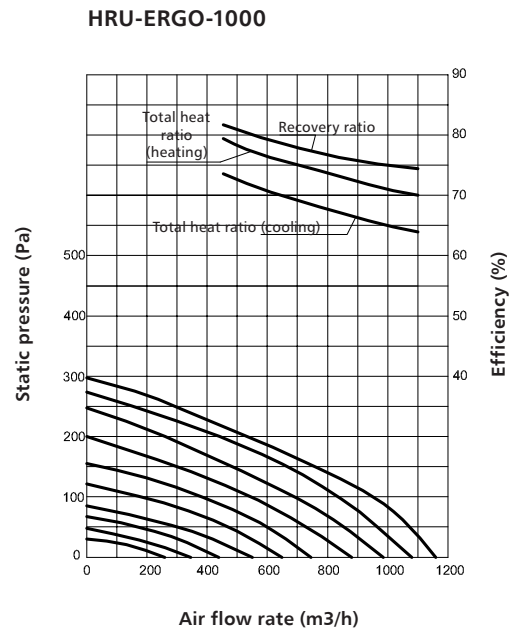
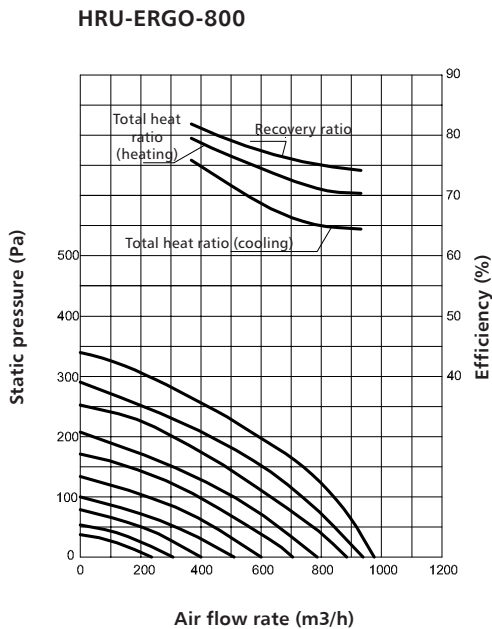
HRU-ERGO-500



Heat recovery ventilator HRU-ERGO

Technical specifications

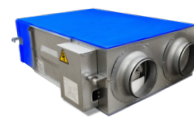
Selection chart



Filters

Product code	Filter class	Dimensions (mm)
HRF-ERGO-250-EU4	EU4	180 x 466
HRF-ERGO-350-EU4	EU4	180 x 670
HRF-ERGO-500-EU4	EU4	180 x 770
HRF-ERGO-650-EU4	EU4	168 x 760
HRF-ERGO-800-EU4	EU4	190 x 760
HRF-ERGO-1000-EU4	EU4	190 x 1010

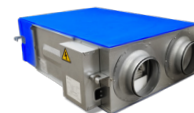
Available combinations



HRU-ERGO HRV



HRU-CONTR-TPAD controller



HRU-ERGO HRV



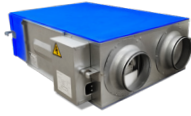
HDE-CO₂ heater

Heat recovery ventilator HRU-ERGO

Available combinations

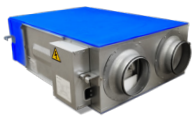


+

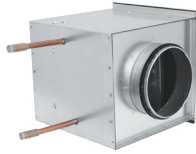


HDE-CO₁ preheater

HRU-ERGO HRV



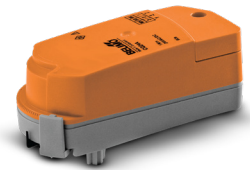
+



+



+

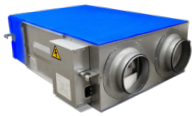


HRU-ERGO HRV

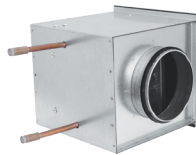
HDW water heater

C215Q-J 2-way valve

CQ230A actuator



+



+



+

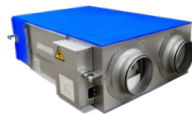


HRU-ERGO HRV

HDW water heater

R3..xx-B.. 3-way valve

TRY230 actuator



+



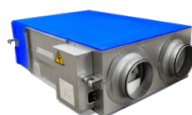
+



HRU-ERGO HRV

HRU-CONTR-TPAD controller

HRQ-ERGO-SENS-CO₂-W sensor CO₂



+



+



HRU-ERGO HRV

HRU-CONTR-TPAD controller

HRQ-ERGO-SENS-RH-W Air humidity sensor

Heat recovery ventilator HRU-ERGO

Energy class

Model	Noise level (dB)	Air flow rate (m ³ /h)	Energy class
HRU-ERGO-250	34,5	250	A
HRU-ERGO-350	37,5	350	A
HRU-ERGO-500	39	500	A
HRU-ERGO-650	39,5	650	A
HRU-ERGO-800	42	800	A
HRU-ERGO-1000	43	1000	A

The image shows a standard EU energy label for the HRU-ERGO-1000 model. At the top left is the European Union flag. To its right, the word 'ENERG' is written in large letters, with 'енергия · ενεργεια' below it. Further right are two sets of circles containing the letters 'Y IJA' and 'IE IA'. Below this is the 'Alnor' logo with 'systemy wentylacji' underneath. The model name 'HRU-ERGO-1000' is printed to the right of the logo. The central part of the label features a vertical scale of energy classes from A+ (green) to G (red). A black arrow points to the 'A' class. Below the scale, two boxes provide specific data: '43 dB' with a speaker icon and '1000 m³/h' with two arrows pointing up and down. At the bottom, the text 'ENERGIA · ЕНЕРГИЯ · ΕΝΕΡΓΕΙΑ · ENERGIJA · ENERGY · ENERGIE · ENERGI' is followed by the year '2016' and the standard number '1254/2014'.