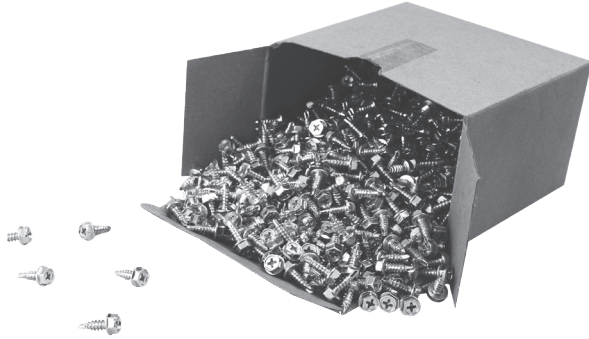


Self-drilling screws for joining ventilation ducts

WGO



Description

WGO self-drilling screws are quick-to-drive fasteners for attaching L, Z and T type brackets to metal sheet. They can also be used to fasten round ducts to round fittings. WGO screws are available with hex-flat heads and/or Philips or Allen key slots. The screws are galvanized. Driver bits are available for specific screw head forms and slots. See the driver bit codes below:

- WGO-NK-KZ - Philips slot bit
- WGO-NK-IB - Allen slot bit

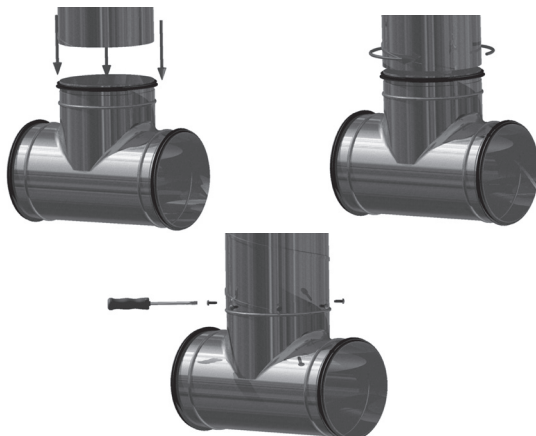
Available materials - Product code example
WGO...-...- galvanized steel sheet

WGO-D-..... screws are recommended for gasket fittings. This screws help reach tightness class D of for full duct installation.

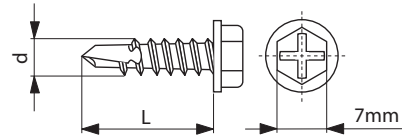
Product code example

Product code: **WGO-13-KL**
type _____

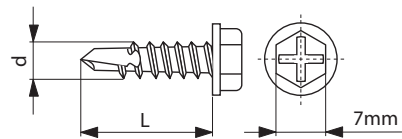
Example of the installation of fittings with the D tightness class



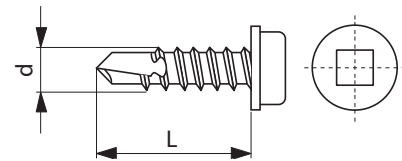
Dimensions



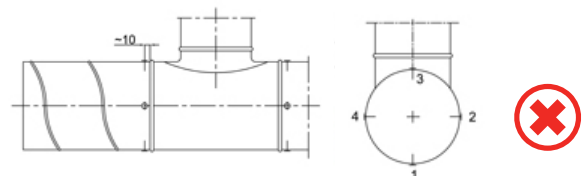
Product code	Ød [mm]	L [mm]	Head form
WGO-D-09	4.2	9	hex head & Philips head



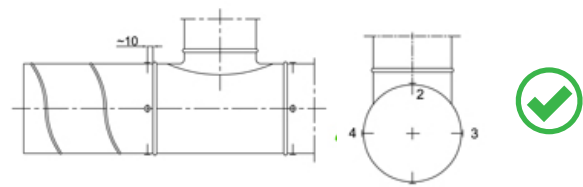
Product code	Ød [mm]	L [mm]	Head form
WGO-09-KZ	4.2	9	hex head & Philips head
WGO-13-KZ	4.2	13	hex head & Philips head
WGO-16-KZ	4.2	16	hex head & Philips head
WGO-19-KZ	4.2	19	hex head & Philips head
WGO-25-KZ	4.2	25	hex head & Philips head



Product code	Ød [mm]	L [mm]	Head form
WGO-09-IB	4.2	9	Philips head
WGO-13-IB	4.2	13	Philips head
WGO-16-IB	4.2	16	Philips head
WGO-19-IB	4.2	19	Philips head
WGO-25-IB	4.2	25	Philips head
WGO-D-09-IB	4.2	9	Philips head



Incorrect installation order of screws on a round duct



Correct installation order of screws on a round duct