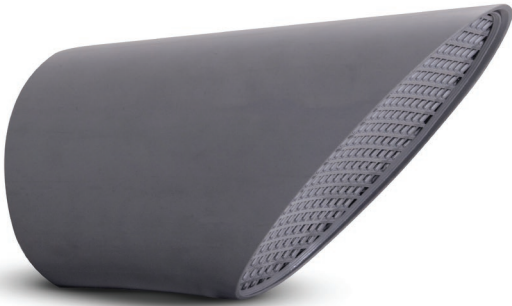


Plastic angle take-off with mesh

PVC-ASVF-30



Description

Plastic angle take-off with mesh 30°, for connecting pipes by welding (or PVC bonding up to Ø 250). Manufactured by the process of injection moulding (Ø 50-315) or prefabricated (from Ø 355).

Available materials - designation example

PVC-ASVF-30-... - PVC polyvinyl chloride
PPs-ASVF-30-... - PPs flame resistant polypropylene

Available materials - upon special order

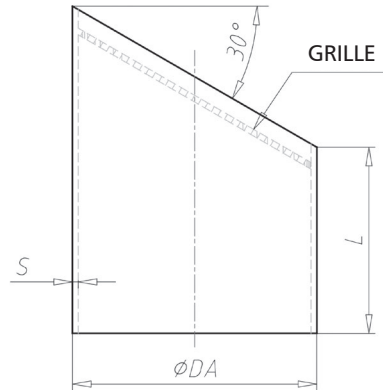
PVCW-ASVF-30-... - white PVC polyvinyl chloride
PP-ASVF-30-... - PP polypropylene
PEELs-ASVF-30-... - PP-EL-s flame resistant electrically
conductive polypropylene
PE-ASVF-30-... - PE polyethylene
PVDF-ASVF-30-... - PVDF plastic

Designation example:

Product Code: **PVC - ASVF-30 - aaa**

material _____
type _____
ØDA _____

Dimensions



Ø _{DA} [mm]	L [mm]	Thickness of S wall [mm]				
		PVC / white PVC	PP	PPs	PE	PP-EL-s
75	100	1,8	1,9	3,0	4,5	3,0
90	100	1,8	2,2	3,0	5,4	3,0
110	100	1,8	2,7	3,0	3,4	3,0
125	100	1,8	3,1	3,0	3,9	3,0
140	100	1,8	3,5	3,0	4,3	3,0
160	100	1,8	4,0	3,0	4,0	3,0
180	150	1,8	4,4	3,0	5,5	3,0
200	150	1,8	3,0	3,0	6,2	3,0
225	150	1,8	5,5	3,5	6,9	3,5
250	150	2,0	3,5	3,5	6,2	3,5
280	200	2,3	6,9	3,5	8,6	3,5
315	200	2,5	5,0	5,0	7,7	5,0
355	200	2,9	5,0	5,0	10,9	5,0
400	200	3,2	6,0	6,0	12,3	6,0
450	250	3,6	5,0	5,0	5,0	5,0
500	250	4,0	5,0	5,0	5,0	5,0
560	250	-	6,0	6,0	6,0	6,0
600	300	5,0	6,0	6,0	6,0	6,0
630	300	-	6,0	6,0	6,0	6,0
700	350	6,0	6,0	6,0	6,0	6,0
710	350	-	6,0	6,0	6,0	6,0
800	400	8,0	8,0	8,0	8,0	8,0

The Ø 560, 630 i 710 angle take-offs are not available in PVC