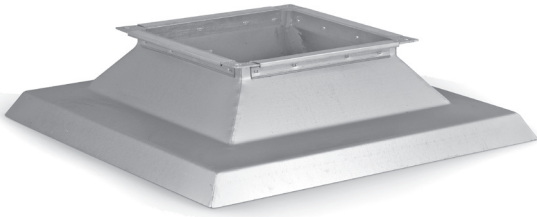


Square roof hood base

PDQ-AI**Description**

PDQ-AI roof bases are designed for termination of ventilation systems directly at the roof surface. The top part has a PQ30 frame angle flange to fit square air intakes and exhaust units. The product is available in all square cross-section sizes with the side length up to 1800 mm. The standard version is intended for flat roofs. The product is optionally available in stainless steel and aluminium sheet.

Made of stainless steel sheet:

The minimum size of the sides: 200x200 mm

The maximum size of the sides: 1800x1800

Made of aluminium sheet:

The minimum size of the sides: 200x200 mm

The maximum size of the sides: 1800x1800

Available materials — Product code examples

- PDQ-AI-...-... - galvanized steel sheet
 PDQ-AI-K-...-... - 1.4301/304 stainless steel sheet
 PDQ-AI-K-...-...-316L - 1.4404/316L stainless steel sheet, molybdenum-enriched
 PDQ-AI-A-...-... - aluminium sheet

Product code example

Product code: **PDQ-AI - 400 - 400**

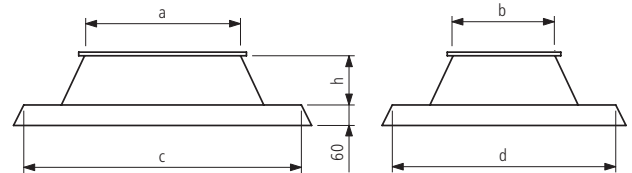
type _____
 a _____
 b _____

Product code examples for standard sizes:

PDQ-AI-a-b **PDQ-AI-400-400**

Medium-pressure version:

PDQ-AI-a-b-S **PDQ-AI-400-400-S**

Dimensions

| <i>a x b</i> [mm] | <i>c x d</i> [mm] | <i>h</i> [mm] |
|----------------------|----------------------|------------------|
| 200x200 | 498x498 | 125 |
| 300x300 | 626x626 | 150 |
| 400x400 | 755x755 | 175 |
| 500x500 | 885x885 | 200 |
| 600x600 | 1014x1014 | 225 |
| 700x700 | 1143x1143 | 250 |
| 800x800 | 1272x1272 | 275 |
| 900x900 | 1401x1401 | 300 |
| 1000x1000 | 1531x1531 | 325 |
| 1100x1100 | 1660x1660 | 350 |
| 1200x1200 | 1789x1789 | 375 |
| 1300x1300 | 1917x1917 | 400 |
| 1400x1400 | 2046x2046 | 425 |
| 1500x1500 | 2175x2175 | 450 |

The standard version (up to 1500x1500) ensures compatibility with other ventilation products, such as roof cubs, hood bases, air intake and exhaust hoods. Not all products can be manufactured with bigger dimensions.