

## Flat tee plate bracket for LDBST

# LDB-PT-41-4



### Description

LDB-PT-41-4 tee plate brackets are ideal for joining the main structural strut, based on an LDBST strut channels, and a shorter section of a similar channel design. Since the tee plate bracket's down leg has only one hole, the fabricated joint requires an additional point of support. This piece is best used for building well-reinforced and neatly finished openwork frames of strut channels.

This product can be used outdoors with a hot-dip galvanized finish.

#### Available materials - Product code example

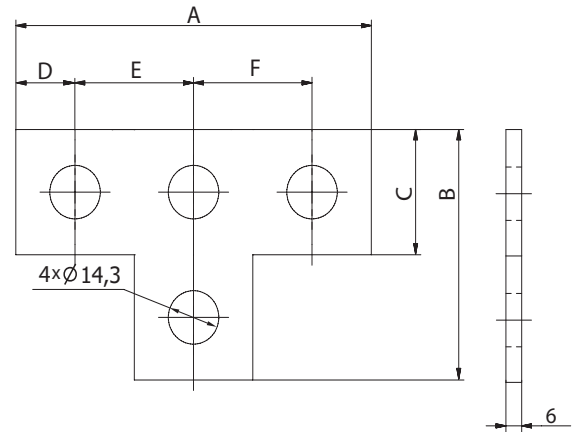
- LDB-PT-41-4 - galvanized steel sheet
- LDB-PT-41-4-Z275 - Z275 galvanized steel sheet
- LDB-PT-41-4-Z600 - hot-dip galvanized steel sheet
- LDB-PT-41-4-K - 1.4301/304 stainless steel sheet
- LDB-PT-41-4-K-316L - 1.4404/316L stainless steel sheet, molybdenum-enriched
- LDB-PT-41-4-A - AW-1050A H24 aluminium sheet

#### Product code example

Product code: **LDB-PT-41-4**

type \_\_\_\_\_

### Dimensions



Product code	A [mm]	B [mm]	C [mm]	D [mm]	E [mm]	F [mm]
LDB-PT-41-4	136	89	41	21	47	47

### Installation method

