

# Angle flat plate bracket for LDBST channel

## LDB-PC-41-3



### Description

LDB-PC-41-3 fittings are angle flat plate brackets with 3 holes. This is often used for fabrication of support frames with LDBST channel openings aligned vertically and flat square support frames. Angle flat plate brackets are easier to use with SNP and SNL unistrut channel washers and SRS screws. This product can be used outdoors with a hot-dip galvanized finish.

#### Available materials - Product code example

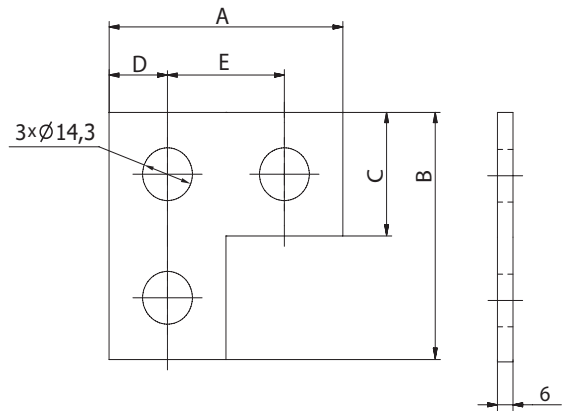
- LDB-PC-41-3 - galvanized steel sheet
- LDB-PC-41-4-Z275 - Z275 galvanized steel sheet
- LDB-PC-41-4-Z600 - hot-dip galvanized steel sheet
- LDB-PC-41-3-K - 1.4301/304 stainless steel sheet
- LDB-PC-41-3-K-316L - 1.4404/316L stainless steel sheet, molybdenum-enriched
- LDB-PC-41-3-A - AW-1050A H24 aluminium sheet

#### Product code example

Product code: **LDB-PC-41-3**

type \_\_\_\_\_

### Dimensions



Product code	A [mm]	B [mm]	C [mm]	D [mm]	E [mm]
LDB-PC-41-3	89	89	41	21	47

### Installation method

