

# Horizontal distribution box for FLX-REKU system

## FLX-PLO-R-P



### Description

The FLX-PLO-R-P/ FLX-PRO-R-P distribution boxes (manifolds) are used to run the domestic ventilation ductwork to each individual room. The air distribution box is equipped with a perforated panel, which is intended for even airflow distribution. As a rule, one air distribution box with a proper amount of FLX duct connection spigots is installed in the supply and exhaust air. However, the number of air distribution boxes depends on the building design. The  $\varnothing d_1$  connection spigot is used to connect the main supply or exhaust duct from the heat recovery unit. FLX-HDPE / FLX-HDPE-A ducting is connected to  $\varnothing d_2$  connection spigots.

FLX-PLO-R-P / FLX-PRO-R-P distribution boxes are made of galvanized steel sheet. Air distribution boxes made from stainless steel are available on request.

Available also insulated distribution box version - FLX-PLI-R-P / FLX-PRI-R-P. These distribution boxes have inside an insulation lining made from 9 mm thick rubber foam.

FLX-PLO-R-P distribution boxes are equipped with duct connection spigots  $\varnothing d_2$  with a EPDM seal – this type of connection with FLX-HDPE ducting is airtight and easy to install.



FLX-CF-PVC end caps fit duct connection spigots  $\varnothing d_2$  of FLX-PLO-R-P and FLX-PRO-R-P distribution boxes.

FLX-PLO-R-P-75-2x3-d1 manifolds are not perforated inside.

#### Product code example

Product code **FLX-PRO-R-P - 75 - 2x10 - 200 -**

type

diameter  $\varnothing d_2$

number of spigots  $n$

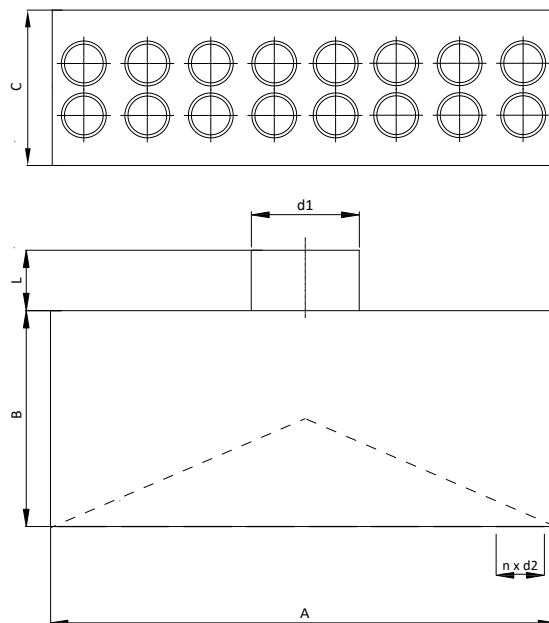
diameter  $\varnothing d_1$

type of connection

male

F - female

### Dimensions



Product code	A [mm]	B [mm]	C [mm]	L [mm]	$d_1$ [mm]	$n$ [pcs.]	$d_2$ [mm]
FLX-PRO-R-P-63-2x5-d1	500	180	230	60	80-200	10	63
FLX-PRO-R-P-63-2x6-d1	600	180	230	60	80-200	12	63
FLX-PRO-R-P-63-2x7-d1	700	180	230	60	80-200	14	63
FLX-PLO-R-P-75-2x3-d1	320	90	220	60	80-200	6	63
FLX-PLO-R-P-75-2x5-d1	500	180	230	60	80-200	10	63
FLX-PLO-R-P-75-2x6-d1	600	180	230	60	80-200	12	63
FLX-PLO-R-P-75-2x7-d1	700	180	230	60	80-200	14	63
FLX-PLO-R-P-90-2x5-d1	500	180	230	60	80-200	10	75
FLX-PLO-R-P-90-2x6-d1	600	180	230	60	80-200	12	75
FLX-PLO-R-P-90-2x7-d1	700	180	230	60	80-200	14	75

Duct connection spigot  $d_1$ : 80, 100, 125, 150, 160, 180, 200mm.

#### Choose distribution box according to number of spigots:

FLX-HDPE $\varnothing$ [mm]	No of FLX duct connection spigots $n$ [pcs.]	Product code of distribution box
63	10	FLX-PRO-R-P-63-2x5-d1
	12	FLX-PRO-R-P-63-2x6-d1
	14	FLX-PRO-R-P-63-2x7-d1
75	6	FLX-PLO-R-P-75-2x3-d1
	10	FLX-PLO-R-P-75-2x5-d1
	12	FLX-PLO-R-P-75-2x6-d1
90	14	FLX-PLO-R-P-75-2x7-d1
	10	FLX-PLO-R-P-90-2x5-d1
	12	FLX-PLO-R-P-90-2x6-d1
	14	FLX-PLO-R-P-90-2x7-d1

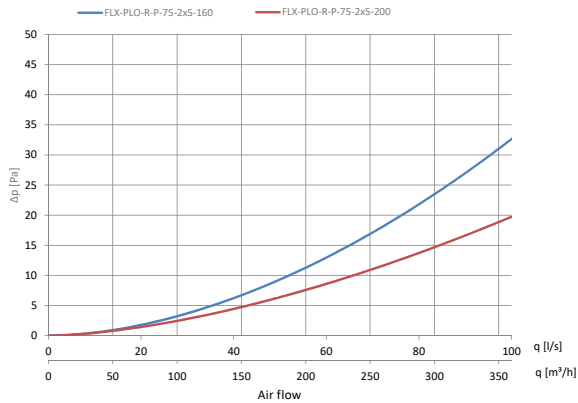
# Horizontal distribution box for FLX-REKU system

## FLX-PLO-R-P

### Technical data

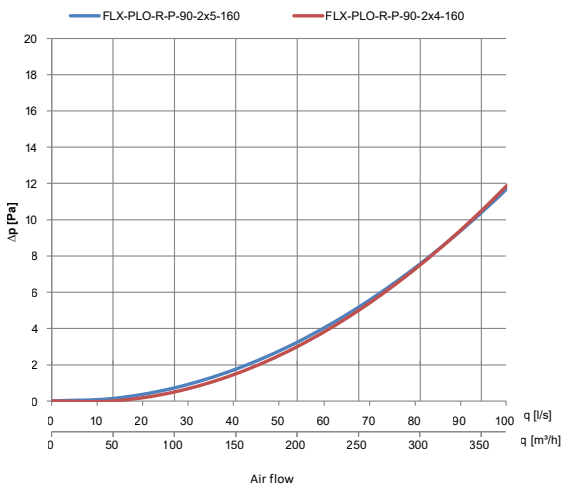
Pressure drop charts for supply air distribution boxes:

#### FLX-PLO-R-P-75-2x5-d1



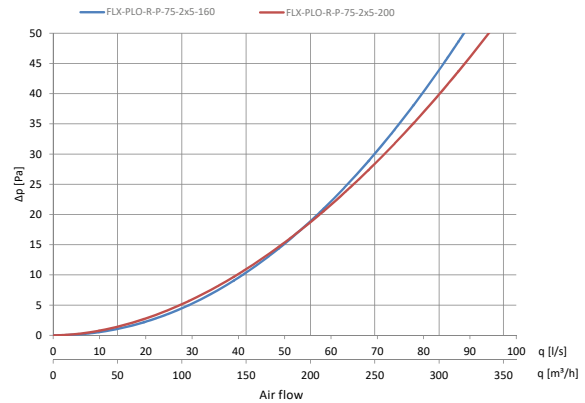
Pressure drop charts for supply air distribution boxes:

#### FLX-PLO-R-P-90-2x5-160 / FLX-PLO-R-P-2x4-160



Pressure drop charts for exhaust air distribution boxes:

#### FLX-PLO-R-P-75-2x5-d1



Pressure drop charts for exhaust air distribution boxes:

#### FLX-PLO-R-P-90-2x5-160 / FLX-PLO-R-P-2x4-160

